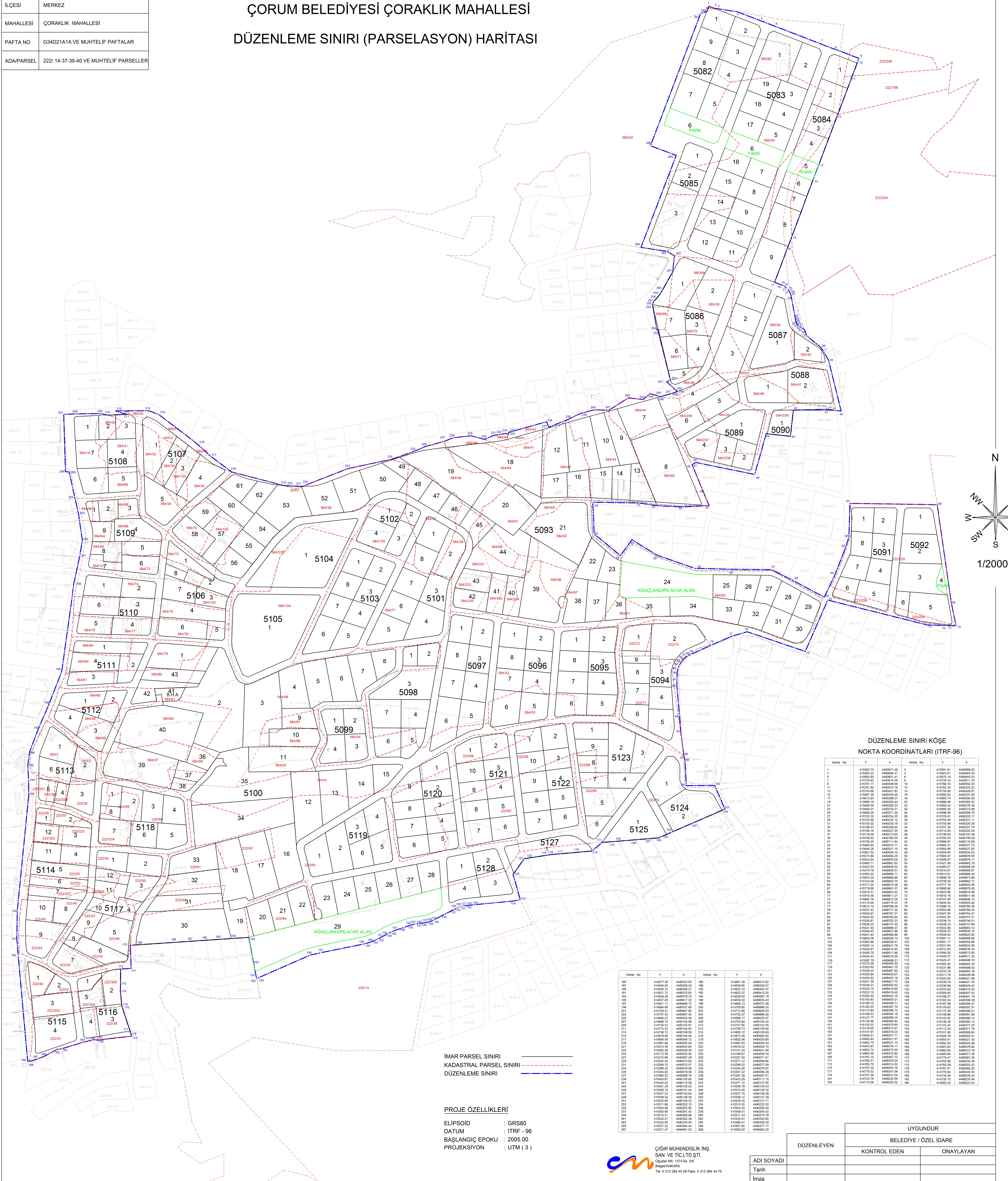


İLİ	ÇORUM
İLÇESİ	MERKEZ
MAHALLESİ	ÇORAKLIK MAHALLESİ
PAFTA NO	G34D21A1A VE MUHTELİF PAFTALAR
ADA/PARSEL	222/ 14-37-38-40 VE MUHTELİF PARSELLER

ÇORUM BELEDİYESİ ÇORAKLIK MAHALLESİ DÜZENLEME SINIRI (PARSELASYON) HARİTASI



DÜZENLEME SINIRI KÖŞE NOKTA KOORDİNATLARI (ITRF-96)

NOKTA NO	Y	X	NOKTA NO	Y	X
1	415582.75	449067.49	2	415591.81	449068.02
2	415582.75	449068.02	3	415602.01	449068.54
3	415582.75	449068.54	4	415612.14	449069.06
4	415582.75	449068.54	5	415622.28	449069.58
5	415582.75	449069.06	6	415632.41	449070.10
6	415582.75	449069.58	7	415642.55	449070.62
7	415582.75	449070.10	8	415652.68	449071.14
8	415582.75	449070.62	9	415662.82	449071.66
9	415582.75	449071.14	10	415672.95	449072.18
10	415582.75	449071.66	11	415683.09	449072.70
11	415582.75	449072.18	12	415693.22	449073.22
12	415582.75	449072.70	13	415703.36	449073.74
13	415582.75	449073.22	14	415713.49	449074.26
14	415582.75	449073.74	15	415723.63	449074.78
15	415582.75	449074.26	16	415733.76	449075.30
16	415582.75	449074.78	17	415743.90	449075.82
17	415582.75	449075.30	18	415754.03	449076.34
18	415582.75	449075.82	19	415764.17	449076.86
19	415582.75	449076.34	20	415774.30	449077.38
20	415582.75	449076.86	21	415784.44	449077.90
21	415582.75	449077.38	22	415794.57	449078.42
22	415582.75	449077.90	23	415804.71	449078.94
23	415582.75	449078.42	24	415814.84	449079.46
24	415582.75	449078.94	25	415824.98	449079.98
25	415582.75	449079.46	26	415835.11	449080.50
26	415582.75	449079.98	27	415845.25	449081.02
27	415582.75	449080.50	28	415855.38	449081.54
28	415582.75	449081.02	29	415865.52	449082.06
29	415582.75	449081.54	30	415875.65	449082.58
30	415582.75	449082.06	31	415885.79	449083.10
31	415582.75	449082.58	32	415895.92	449083.62
32	415582.75	449083.10	33	415906.06	449084.14
33	415582.75	449083.62	34	415916.19	449084.66
34	415582.75	449084.14	35	415926.33	449085.18
35	415582.75	449084.66	36	415936.46	449085.70
36	415582.75	449085.18	37	415946.60	449086.22
37	415582.75	449085.70	38	415956.73	449086.74
38	415582.75	449086.22	39	415966.87	449087.26
39	415582.75	449086.74	40	415977.00	449087.78
40	415582.75	449087.26	41	415987.14	449088.30
41	415582.75	449087.78	42	415997.27	449088.82
42	415582.75	449088.30	43	416007.41	449089.34
43	415582.75	449088.82	44	416017.54	449089.86
44	415582.75	449089.34	45	416027.68	449090.38
45	415582.75	449089.86	46	416037.81	449090.90
46	415582.75	449090.38	47	416047.95	449091.42
47	415582.75	449090.90	48	416058.08	449091.94
48	415582.75	449091.42	49	416068.22	449092.46
49	415582.75	449091.94	50	416078.35	449092.98
50	415582.75	449092.46	51	416088.49	449093.50
51	415582.75	449093.02	52	416098.62	449094.02
52	415582.75	449093.54	53	416108.76	449094.54
53	415582.75	449094.06	54	416118.89	449095.06
54	415582.75	449094.58	55	416129.03	449095.58
55	415582.75	449095.10	56	416139.16	449096.10
56	415582.75	449095.62	57	416149.30	449096.62
57	415582.75	449096.14	58	416159.43	449097.14
58	415582.75	449096.66	59	416169.57	449097.66
59	415582.75	449097.18	60	416179.70	449098.18
60	415582.75	449097.70	61	416189.84	449098.70
61	415582.75	449098.22	62	416199.97	449099.22
62	415582.75	449098.74	63	416210.11	449099.74
63	415582.75	449099.26	64	416220.24	449100.26
64	415582.75	449099.78	65	416230.38	449100.78
65	415582.75	449100.30	66	416240.51	449101.30
66	415582.75	449100.82	67	416250.65	449101.82
67	415582.75	449101.34	68	416260.78	449102.34
68	415582.75	449101.86	69	416270.92	449102.86
69	415582.75	449102.38	70	416281.05	449103.38
70	415582.75	449102.90	71	416291.19	449103.90
71	415582.75	449103.42	72	416301.32	449104.42
72	415582.75	449103.94	73	416311.46	449104.94
73	415582.75	449104.46	74	416321.59	449105.46
74	415582.75	449104.98	75	416331.73	449105.98
75	415582.75	449105.50	76	416341.86	449106.50
76	415582.75	449106.02	77	416352.00	449107.02
77	415582.75	449106.54	78	416362.13	449107.54
78	415582.75	449107.06	79	416372.27	449108.06
79	415582.75	449107.58	80	416382.40	449108.58
80	415582.75	449108.10	81	416392.54	449109.10
81	415582.75	449108.62	82	416402.67	449109.62
82	415582.75	449109.14	83	416412.81	449110.14
83	415582.75	449109.66	84	416422.94	449110.66
84	415582.75	449110.18	85	416433.08	449111.18
85	415582.75	449110.70	86	416443.21	449111.70
86	415582.75	449111.22	87	416453.35	449112.22
87	415582.75	449111.74	88	416463.48	449112.74
88	415582.75	449112.26	89	416473.62	449113.26
89	415582.75	449112.78	90	416483.75	449113.78
90	415582.75	449113.30	91	416493.89	449114.30
91	415582.75	449113.82	92	416504.02	449114.82
92	415582.75	449114.34	93	416514.16	449115.34
93	415582.75	449114.86	94	416524.29	449115.86
94	415582.75	449115.38	95	416534.43	449116.38
95	415582.75	449115.90	96	416544.56	449116.90
96	415582.75	449116.42	97	416554.70	449117.42
97	415582.75	449116.94	98	416564.83	449117.94
98	415582.75	449117.46	99	416574.97	449118.46
99	415582.75	449117.98	100	416585.10	449118.98
100	415582.75	449118.50	101	416595.24	449119.50
101	415582.75	449119.02	102	416605.37	449120.02
102	415582.75	449119.54	103	416615.51	449120.54
103	415582.75	449120.06	104	416625.64	449121.06
104	415582.75	449120.58	105	416635.78	449121.58
105	415582.75	449121.10	106	416645.91	449122.10
106	415582.75	449121.62	107	416656.05	449122.62
107	415582.75	449122.14	108	416666.18	449123.14
108	415582.75	449122.66	109	416676.32	449123.66
109	415582.75	449123.18	110	416686.45	449124.18
110	415582.75	449123.70	111	416696.59	449124.70
111	415582.75	449124.22	112	416706.72	449125.22
112	415582.75	449124.74	113	416716.86	449125.74
113	415582.75	449125.26	114	416727.00	449126.26
114	415582.75	449125.78	115	416737.13	449126.78
115	415582.75	449126.30	116	416747.27	449127.30
116	415582.75	449126.82	117	416757.40	449127.82
117	415582.75	449127.34	118	416767.54	449128.34
118	415582.75	449127.86	119	416777.67	449128.86
119	415582.75	449128.38	120	416787.81	449129.38
120	415582.75	449128.90	121	416797.94	449129.90
121	415582.75	449129.42	122	416808.08	449130.42
122	415582.75	449129.94	123	416818.21	449130.94
123	415582.75	449130.46	124	416828.35	449131.46
124	415582.75	449130.98	125	416838.48	449131.98
125	415582.75	449131.50	126	416848.62	449132.50
126	415582.75	449132.02	127	416858.75	449133.02
127	415582.75	449132.54	128	416868.89	449133.54
128	415582.75	449133.06	129	416879.02	449134.06
129	415582.75	449133.58	130	416889.16	449134.58
130	415582.75	449134.10	131	416899.29	449135.10
131	415582.75	449134.62	132	416909.43	449135.62
132	415582.75	449135.14	133	416919.56	449136.14
133	415582.75	449135.66	134	416929.70	449136.66
134	415582.75	449136.18	135	416939.83	449137.18
135	415582.75	449136.70	136	416949.97	449137.70
136	415582.75	449137.22	137	416960.10	449138.22
137	415582.75	449137.74	138	416970.24	449138.74
138	415582.75	449138.26	139	416980.37	449139.26
139	415582.75	449138.78	140	416990.51	449139.78
140	415582.75	449139.30	141	417000.64	449140.30
141	415582.75	449139.82	142	417010.78	449140.82
142	415582.75	449140.34	143	417020.91	449141.34
143	415582.75	449140.86	144	417031.05	449141.86
144	415582.75	449141.38	145	417041.18	449142.38
145	415582.75	449141.90	146	417051.32	449142.90
146	415582.75	449142.42	147	417061.45	449143.42
147	415582.75	449142.94	148	417071.59	449143.94
148	415582.75	449143.46	149	417081.72	449144.46
149	415582.75	449143.98	150	417091.86	